



## SWISS PARK

Swiss owned and operated since 1935

# AELPLER GRUPPE SWISS CLUB

Founded 1925

# NEWSLETTER

[www.aelplergruppe.com](http://www.aelplergruppe.com)

Volume XXXI Issue 2, April - June 2023

## Aelpler Gruppe Jass Party & Fondue Dinner



Aelpler Gruppe's annual Jass Party and Fondue dinner was hosted on Sunday, February 26th, 2023. The day began with the Jass tournament in which players challenged each other to earn the most points and take home the title of Jass Königin & König.

This year, the winners were Mary Lou Haslemann and Joe Beeler.

Meanwhile the Fondue Crew was busy making the fondue as well as platters of prosciutto, landjäger, and olives to go with it. A side salad was served before the hot fondue was brought out and poured into the waiting pots at each table.

This year's delicious fondue, made by Arnold Ambiel and his crew was made with gruyere and raclette cheese, as well as schnapps and other ingredients.



Following dinner, a variety of wonderful Swiss items were given out to those whose ticket numbers matched the ones drawn from the ticket tumbler.

We thank all of those who contributed to our drawing by donating prizes.

We also extend a special thank you to all of the volunteers who made the Jass and Fondue party successful. We sincerely appreciate you!



## Folklore Luncheon & Dance Sunday, April 16th at 12:00 noon

Honoring Bill  
Bauhofer & Family

Reservations Due  
March 31st



## Aelpler Gruppe Swiss Club Semi-Annual Members Meeting Sunday May 7th, 2pm



Join the Swiss Benevolent  
Society at their Spring  
Picnic!  
Sunday May 21, 11:00am



Is your child or grandchild  
graduating this year?

Send in their graduation information  
and a photo so they can be  
congratulated in the next newsletter  
for their achievements!

## Jass Practice



2nd Sunday of each month  
from 2:00 - 4:00 p.m.



Apr 23 meeting will be held at Swiss Club Tell

Aelpler Gruppe Swiss Club Facebook page  
[www.facebook.com/aelplergruppesswissclub](https://www.facebook.com/aelplergruppesswissclub)



## President's Message By Arnold Ambiel

Dear Aelplers,

Anyone else tired of winter? Spring is here. Let's celebrate together.

The hall and park are doing well. Rental deposits are up for 2023. Thanks Bob, Wanda and the Swiss Park Board.

Thanks to everyone who attended our Fondue and Jass Party in February. It was a great turnout and the Fondue Crew made their best fondue EVER. The Jass games have grown in popularity and it was great to see so many young players. Thanks to all the volunteers who made this possible.

Join us on April 16th for our Folklore Luncheon honoring Bill Bauhofer and family. We have quite the program planned about the Bauhofers and the Cloverdale Creamery. Invite your friends and join us. Kapella Gander Scheiber will perform. Life members can look for a mailing from us this week. Sorry for the delay.

We are two and a half years away from the 100th anniversary of our Club in 2025. Maybe we should have a party. Anyone have any ideas? Let us know.

And thanks to Gene Ramsell Jr for scanning four decades worth of his mother's Swiss Park Chit Chat columns. He has shared them with us, and we are working on getting them up on our website.

It's Schwingfest season again and the first one will be held in Imperial Valley on March 25th. Next year the Imperial Valley Swiss Club will celebrate their 100th anniversary.

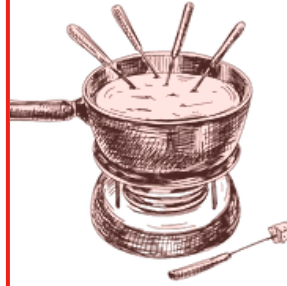
I was sorry to hear about the winding down of the Humboldt Swiss Club in Loleta, Ca. Glad that another organization could accept their hall: the Scotia Band now has a home.

Next Trivia Question: What tunnel connects the cantons of Uri and Ticino? Call/text me the answer at 510-936-2523. We'll draw a winner from the first 3 received. No entries were received last time. Check inside for the last question and answer.

Ich wünsche euch alles Gute,

Arnold

## More Photos from Fondue Dinner & Jass Party



View the Fondue  
Dinner video  
produced by  
Tom Coroneos  
here!

<https://www.youtube.com/watch?v=-TcgwbIXU2c>



We had a fun time at our **Jass Practice** on Sunday, March 12th. Join us next time to learn how to play with the experts!





## **Aelpler Gruppe 2023 Hikes:**

**Sunday, March 26**

Coyote Lake Harvey Bear Ranch  
(May change due to trail closure)

**Sunday, July 23**

Sanborn County Park

**Sunday, October 22**

Baltimore Canyon Open Space Preserve



## **Looking Back on a Century of Swiss Club:**

Long time Aelpler Gruppe Member, Patricia Wipfli-Schaffarczyk, recently gave a presentation with the Washington Township Historical Society about the history of our club. She shared the nearly 100 years of Aelpler Gruppe history with a pictorial collage of club activities by decade. A local newspaper, the Tri-City Voice featured her photos and history in an article written by Stephanie Gertsch.



**View the article here!**

<https://tricityvoice.com/archives/2023/TCV-230131.pdf#page=5>

**Jass** enthusiasts please come to the Swiss Park Hall and join Aelpler Gruppe Swiss club for our monthly **Jass Get-together**.

Meet us on the **2nd Sunday of each month** at Swiss Park from 2 pm to 4 pm. All interested players regardless of skill level or familiarity with the game are welcome.

For more information, please text:  
Patricia Schaffarczyk (510) 677-8461  
Rick Steiner (209) 359-7604

### **Dates:**

April 23 - Swiss Club Tell- Basque Cultural Center	
May 28	September 10
June 11	October 8
July 9	October 2 - Tournament
August 13	November 12



United Swiss Societies is hosting an online auction again for the 1st of August celebration this year. Get ready to place those bids!

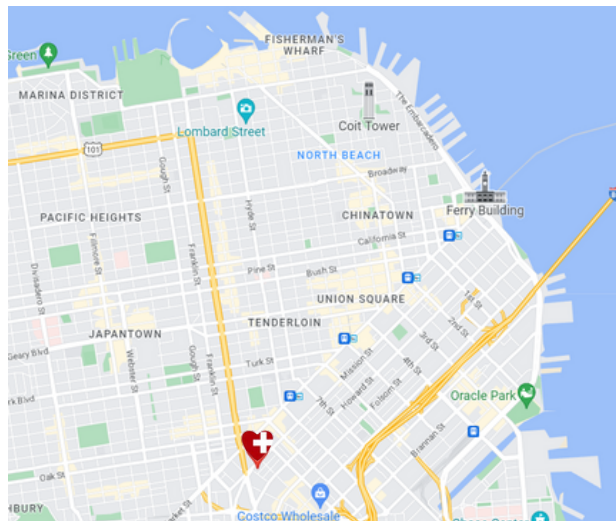


## **Swiss Consulate Update**

Consul Silvia Gerber will leave her post at the Consulate in June for Abu Dhabi. Beat Henzen will replace her spot at the consul.

The major cultural event at the Consulate this year will be the 20th Anniversary Celebration of Swissnex and Zurich being San Francisco's Sister City.

The SF Swiss Consulate will relocate in 2026. It will be located on Mission Street between 10th and 11th.



The new address for the Swiss Consulate as of 2026 is 1535 Mission Street, San Francisco.

<https://www.archdaily.com/977169/architectural-rfp-house-of-switzerland-in-san-francisco>



**San Joaquin Valley Swiss Echoes** invites you to their **Spring Concert!**  
Sunday April 15, 2023 at San Joaquin Valley Swiss Club

### **Special Guest:**

Jodeler & Accordionist Art Brogli

### **Dance & Swiss Music:**

Haslital Kapelle

Doors open at 2:00pm  
Concert begins at 3:00pm

For more info contact

[SJVSwissEchoes@gmail.com](mailto:SJVSwissEchoes@gmail.com)



The Swiss Park Board of Directors is looking for any life member that might have an interest in joining the Board. If interested or seeking information about what we do please contact Tom Imholz @ (510)517-8312 or [tjimholz@comcast.net](mailto:tjimholz@comcast.net).

## **Aelpler Gruppe 2023 Calendar of Events**

[www.facebook.com/aelplergruppeswissclub](https://www.facebook.com/aelplergruppeswissclub)

April 16	Folklore/Spring Dance
May 7	Semi-Annual Members Meeting
May 21	Swiss Benevolent Society Spring Picnic
August 5	United Swiss Societies - Swiss National Day
August 26	Fall Schwingfest in Newark
November 5	Annual Members Meeting
November 11	Metzgete Dinner
December 2	Members Christmas Lunch

Jass practice - 2nd Sunday of each month (see email updates)

Club hikes - See Newsletter, email updates, Facebook page



### **United Swiss Societies**

Diane Wagner, President 510-582-0698

[www.unitedswissnorcal.org](http://www.unitedswissnorcal.org)

### **Peninsula Swiss Club**

Contact: Erich Sonnberger 650-505-9802

[esonberger@interorealestate.com](mailto:esonberger@interorealestate.com)

[www.peninsulaswissclub.com](http://www.peninsulaswissclub.com)

**Swiss Consulate General**, Balz Abplanalp  
Pier 17, Suite 600, San Francisco, CA 94111  
Phone: 415-788-2272

[www.eda.admin.ch/sanfrancisco](http://www.eda.admin.ch/sanfrancisco)

Contact information for **Western US Swiss Clubs**:

Visit the Swiss Consulate General's website:

[https://www.eda.admin.ch/dam/countries/countries-content/united\\_states-of-america/en/112.0\\_CHclubsSF.pdf](https://www.eda.admin.ch/dam/countries/countries-content/united_states-of-america/en/112.0_CHclubsSF.pdf)

### **Swiss Rifle Club Events**

Contact: Stephen Hurst at (831) 927-9296

E-Mail: [carmelgunclub@outlook.com](mailto:carmelgunclub@outlook.com)

More information at: [www.carmelgunclub.com](http://www.carmelgunclub.com)

**January Trivia question:** Where will the 120 best Schwingers in the world be this August?

**Answer:** At the Unspunnen-Schwinget 2023 in Interlaken. While the full Unspunnen Festival is held every 12 years in Interlaken, there is a Schwinget every 6 years. The next one will be in 2029.

**Winner:** No answers received

## **Swiss Park 2023 Events**

**5911 Mowry Avenue, Newark 510-793-6272**

[www.swissparknewark.com](http://www.swissparknewark.com)

Mondays	Bingo Monday
April 1	LOV Casino Night
June 17	San Juan Festival

### **SJVSC, Ripon 2023 Calendar of Events**

[www.sjvscripsonswiss.com](http://www.sjvscripsonswiss.com) Tony Berchtold, President

April 15	Swiss Echoes Concert / Swiss Club Lunch
April 29	Kids Swiss Camp
June 3	Spring Schwingfest
July 29	Members BBQ and Buebe/Meitli Schwingfest
September 2	Fall Schwingfest
October 7	Oktoberfest
October 21	Swiss Echoes Fall Concert
November 12	Fall Jass Party
December 10	Children's Christmas Party

### **Sierra Swiss Club Calendar**

Contact: Urs Gwerder 530-587-8316

[Sierraswissclub.org](http://Sierraswissclub.org)

### **Pro Ticino**

<http://www.proticino.ch/>

### **West Coast Swiss Wrestling Association Board**

Board President – Arnold Ambiel

Vice President – Urs Gwerder

Treasurer – Don Widmer

Secretary – Chris Schallberger

West Coast Schwingfests are online at

<http://schlussgang.ch/>

June 3 San Joaquin Valley Swiss Club – Ripon, CA

June 17 San Diego Swiss Club – San Diego, CA

June 24 Tacoma Swiss Club – Bonney Lake, WA

July 1-2 Lewis-Pacific Swiss Club – Frances, WA

July 15 Sierra Swiss Club – Truckee, CA (Championship Schwingfest)

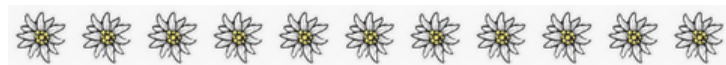
August 5 Portland Swiss Club – Portland, OR

August 11-14 Tacoma Swiss Club – Bonney Lake, WA

August 26 Aelpler Gruppe Swiss Club – Newark, CA

September 2 San Joaquin Valley Swiss Club – Ripon, CA

TBD Tillamook Swiss Club – Tillamook, OR



For other updates go to:

<https://esv.ch/> <https://schlussgang.ch/>

<http://efsv.ch/> [Frauen Schwingen](http://FrauenSchwingen)

<https://www.facebook.com/groups/luttesuisse/>

## Obituary: Lloyd James Harman

August 24, 1930, to January 24, 2023

Aelppler Gruppe Life Member, Lloyd Harman, passed away peacefully on January 24, 2023. Born in 1930 in Jersey City, New Jersey, Lloyd James Harman was raised in humble circumstances. He was a remarkably successful man in all areas of life, and his passing on January 24, 2023, at the age of 92 has left a tremendous void for his family.



Lloyd was raised by a single mom after his father abandoned the family when he was a young child. Much of Lloyd's outstanding work ethic, outlook on life, and sense of humor were instilled by his mother. Lloyd was devoted to her and when he moved to California in 1950 to pursue more opportunities, he brought his mother with him. Lloyd lived in Centerville and participated in the vote to incorporate Centerville and other towns into the City of Fremont. He lived in Fremont all his life and watched the cauliflower fields and cow pastures make way for residential and business growth. Lloyd was a milkman for the Cloverdale Creamery and later did building maintenance for Glendale Federal Savings.



He was a Master Mason with the Grand Lodge of Free and Accepted Masons of California. Lloyd was true to his motto, "You work hard for your money, make your money work hard for you." Lloyd enjoyed many travelling adventures to five continents with his wife and family.

He maintained a positive outlook on life with a good sense of humor, quick wit, and common sense. In 1963, Lloyd met the love of his life, Anne Suter, at the Swiss Park in Newark, California. His first question to the beautiful Swiss immigrant was, "Do you speak English?" and a life-long love story was born. They were married in 1965 and enjoyed a happy life together until Anne's death in 2011. Lloyd was a wonderful husband and outstanding father who took great pride in his family of four children; Barbara (John), Patricia (Steve), Terry (Will), and Craig (Kristin), eight grandchildren; Caitlin (Sofie), Savannah (Zach), Rachel (Alex), Aaron, Kevin, Claire, Connor, and Chloe, and one great-grandchild (Felicity). Lloyd is also survived by many beloved family members in Switzerland, Texas, and Georgia.

**Memorial Fund donations** thru the Aelppler Gruppe website:  
<https://www.aelpplergruppe.com/donations/>

We are grateful for donations to the Memorial Fund to honor members who have passed.

In memory of **Lloyd Harman**  
 Karyn Sinunu-Towery & James Towery  
 Patricia & Steve Murray  
 Antoinette Betschart  
 Gene Ramsell  
 Ed & Michelle Ott  
 Agnes Reed  
 Dave and Margrith Reichmuth  
 Gery and Rosemary Wagner  
 Leo and Charlene Ott

In memory of **Bob Ulrich**  
 Dave & Margrith Reichmuth  
 Pete & Jackie Zuger

In memory of **Joe & Marie Muller**  
 Kathi & Rene Mathys

In memory of **Helen Marchy**  
 Kathi & Rene Mathys  
 Ed & Michelle Ott

In memory of **Rosemary Ramsell**  
 Diane Wagner  
 Marilyn Ramsell  
 Robyn Evans  
 Rhondda Parker  
 Margaret Marchy  
 Les Spichtig  
 Kathi & Rene Mathys  
 Ed & Michelle Ott

In memory of **Elsie Holdener**  
 Ed & Michelle Ott

In memory of **Lenard Marchy**  
 Ed & Michelle Ott

In memory of **Kathy Koller**  
 Margaret Marchy

In memory of **Mariette Franke**  
 Ed & Michelle Ott

In memory of **Louie Ettlin**  
 Margaret Marchy

In memory of **Louie Ettlin**  
 Ed & Michelle Ott

In memory of **Walter Haslemann**  
 Diane Wagner  
 Ed & Michelle Ott

In memory of **Mariette Franke**  
 Diane Wagner



Passing of individuals in the greater Swiss community:

**Henry Achermann**- Father of Rebecca Achermann, Member of United Swiss Societies

**Arnold Rothlin Jr**- Of Manteca, Member of SJVSC, Ripon



**Whom to contact when a Swiss Club member is deceased:**

Please e-mail our Corresponding Secretary,  
 Kathi Mathys-Imholz at [56kmathys@gmail.com](mailto:56kmathys@gmail.com)  
 or call 530-949-1872



## Chalet Böbs

MÜRREN, SWITZERLAND

Imagine a classic Swiss vacation with breathtaking views of the Eiger, Jungfrau and Mönch right from your patio. Escape to Mürren and stay at the delightful Chalet Böbs – book one of our 4 self-contained apartments. 3 and 2-bedroom, and studio apartments available – great rates!

<https://www.chaletbobs.com>

Hosts: Steve & Monika Ambiel



Hofstrasse 3 6074 Giswil Switzerland

Tel. 041 676 00 36

[www.ediths-alpenrosli.ch/](http://www.ediths-alpenrosli.ch/)

## COLONY

Edward L. Ott

President

[ed@colonylandscape.com](mailto:ed@colonylandscape.com)

4911 Spreckles Avenue, P.O. Box 940, Alviso, CA 95002-094

T: 408.941.1090 F: 408.941.1094 [www.colonylandscape.ca](http://www.colonylandscape.ca)

CLCA | Lic. No. C27 A 566808

## Matterhorn to disappear from Toblerone chocolate bars



Switzerland's iconic Matterhorn mountain, sometimes called the "Toblerone mountain", is to disappear from the packaging of the famous Swiss chocolate bar, as it is also being made abroad. The words "made in Switzerland" will also disappear from bars to be made in Slovakia, in accordance with "Swissness" legislation. There will be a "modernized mountain logo" instead, but the bear hidden on the side of the Matterhorn will be retained. The signature of Toblerone's founder will also be visible.

Strict regulations for "Swiss Made" products have been in place since 2017. The aim is to protect the "Swiss" brand from abuse and guarantee a long-term advantage for companies producing in Switzerland. ([swissinfo.ch](http://swissinfo.ch))

## SWISS 6 US GATEWAYS to ZURICH 1 US GATEWAY to GENEVA

DAILY NON-STOPS from San Francisco, Los Angeles, Chicago, New York, Newark, Boston & Miami; fly into one city, return from another European city. **BOOK EARLY** - For Economy book by mid-Jan and for Business Class by mid Feb. for lowest fares!

**TRUST US consolidator rates can BEAT THE NET!!**

A HIGH-SCHOOL or COLLEGE GRADUATION present:

**Contiki EUROPEAN or US TOUR**

Especially tailored to the Young from age 18-35!

They'll remember it forever –  
CONTIKI – to all Continents!!

**contiki**



## GRAND PRINCESS of Princess Cruises

Is now headquartered in San Francisco.

Cruise from SF & LA to

ALASKA, MEXICO, HAWAII, PANAMA CANAL & AUSTRALIA.



## ENHANCE your EUROPEAN VACATION with a 7 or 14-day RIVER CRUISE

on one of Europe's main rivers: RHINE, DANUBE, MOSEL, MAIN, ELBE, SEINE & RHONE! **AMA-WATERWAYS** is a very classy product, offers all shore excursions, gourmet meals with select wines and gratuities included. SEE EUROPE the EASY WAY – no packing or running for trains :) Call for an offer... you'll experience THE best way to see Europe!



Call Toll Free  
**877.388.9695**  
or **415.553.7711**

**JASON TRAVEL, INC.** [www.jasontravel.com](http://www.jasontravel.com) • [travel@jasontravel.com](mailto:travel@jasontravel.com)

We represent all Airlines, Cruise Lines & the best ESCORTED TOUR COMPANIES.

One call for the World! 1910-2019 • 269 States St, San Francisco, CA 94114 • CST #1005510-10



# **Aelpler Gruppe Swiss Club, Inc.**

**Invites you to:**



## **Swiss Folklore Luncheon & Dance**

**Honoring Bill Bauhofer & Family**

**Sunday, April 16, 2023**

**Newark Swiss Park 5911 Mowry Ave., Newark, CA**

**12:00 Noon: No-Host Bar**

**1:00 pm - 2:00 pm: Luncheon & Dessert**

**Chef Charlie Schonenberger will prepare a choice of  
Bratwurst with sides or Roasted Vegetables over Polenta**

**Cost: \$25.00      Children's meal \$10.00 (12 and under)**

**2:00 pm - 3:00 pm: Program**

**3:00 pm - 5:00 pm: Dancing to Kapelle Gander Scheiber**

\*\*\*\*\* Cut here \*\*\*\*\*

CHECK MEAL PREFERENCE of Bratwurst (BW) or Polenta (Veg) below

Adult(s) \_\_\_\_\_ BW: \_\_\_\_\_ Veg: \_\_\_\_\_

Name(s) \_\_\_\_\_ BW: \_\_\_\_\_ Veg: \_\_\_\_\_

Children: \_\_\_\_\_ BW: \_\_\_\_\_ Veg: \_\_\_\_\_

\_\_\_\_\_ BW: \_\_\_\_\_ Veg: \_\_\_\_\_

**PLEASE MAKE YOUR RESERVATIONS NO LATER THAN March 31, 2023**

**Make checks payable to: Aelpler Gruppe Swiss Club**

**Mail reservation form above and check to: Aelpler Gruppe Swiss Club**

**c/o Michelle Bauhofer-Ott**

**1651 Belvoir Dr., Los Altos, CA 94024**

**Contact: Michelle Ott (408) 687-7708**

**E-mail: aelplergruppe@gmail.com**

# General Information

## Aelpler Gruppe Board of Directors Meeting

First Thursday of each month at 6:30 p.m. at Newark Swiss Park unless otherwise notified

## Newark Swiss Park Board of Directors Meeting

Third Wednesday of each month at 7:30 p.m. at Newark Swiss Park unless otherwise notified

## Newark Swiss Park Board of Directors

President	Thomas Imholz Jr.
Vice President	(Vacant)
Treasurer	Carl Ramsell
Secretary	Susanne Cameron
Assistant Secretary	Herman Betchart

**Swiss Park Manager** Robert Fuchslin

**Newsletter Editor** Rose & Lauren Satariano  
[aelplergruppe@gmail.com](mailto:aelplergruppe@gmail.com)

**Videographer** Tom Coroneos

**Memorial Fund Chairperson** Jackie Zuger

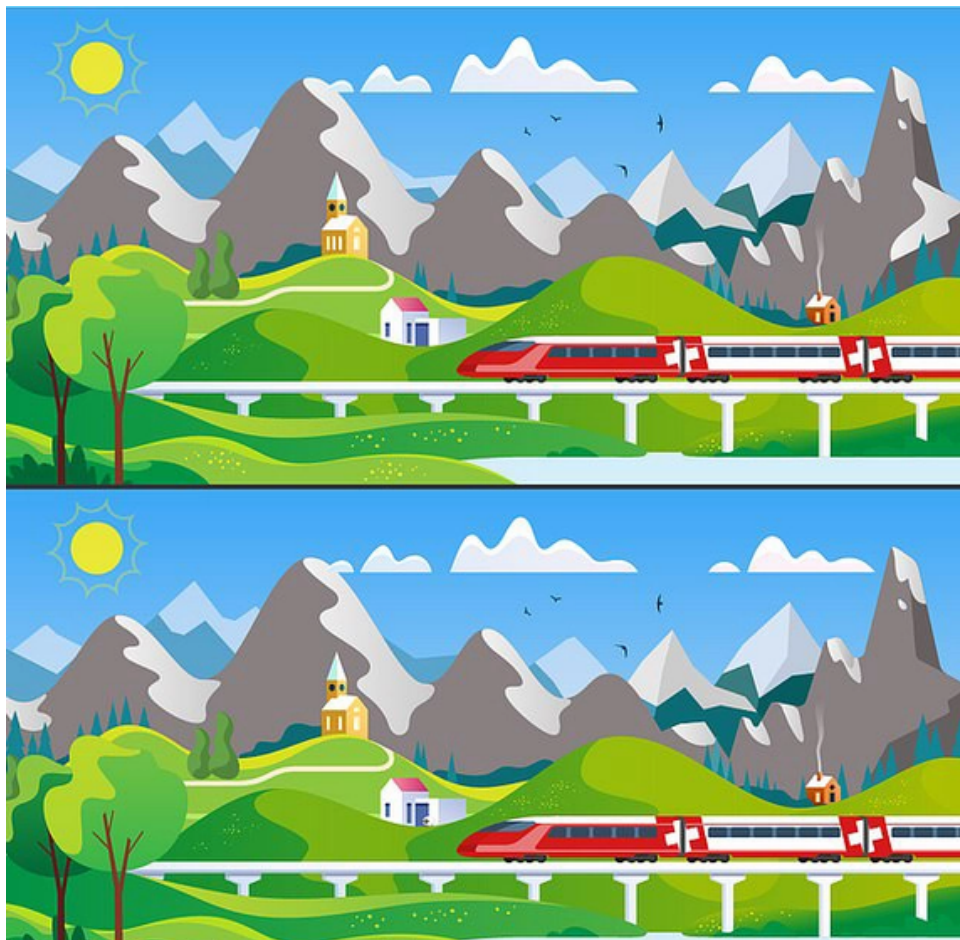
## Have you moved?

Please forward your new address to Kathi Mathys-Imholz, Corresponding Secretary, Via e-mail to: [aelplergruppe@gmail.com](mailto:aelplergruppe@gmail.com) Thank you.

# Officers

## Aelpler Gruppe Swiss Club Board of Directors for 2023

President	Arnold Ambiel 510-936-2523
1st Vice Pres	Marilyn Ramsell Manchester
2nd Vice Pres	Hugo Reichmuth
Recording Secretary	Monica Ulrich
Corresp. Secretary	Kathi Mathys-Imholz
Treasurer	Margrith Reichmuth
Assistant Treasurer	Michelle Bauhofer-Ott
Past President	Kurt Clausen
Director 1 - Music/Historian	Pat Wipfli-Schaffarczyk
Director 2 - Membership	Karen Dobbelt
Director 3 - Newsletter Editor	Rose Satariano
Director 4 - Historian	Darrell Ramsell
Director 5 - Wrestling	Dominick Reichmuth
Sennenmutter	
Sennenvater	Pete Zuger
USS Delegate	Arnold Ambiel



## Can you find the EIGHT differences in this brainteaser challenge and beat the 58 second record?

The brainteaser was created by Great Rail Journeys to celebrate the 90th anniversary of the Glacier Express in 2020.

The Glacier Express (GEX) is a direct train connecting railway stations of the two major mountain resorts of Zermatt and St. Moritz via Andermatt in the central Swiss Alps. The Glacier Express is known as the slowest *express* train in the world in that it provides a one-seat ride for an 8-hours-long end-to-end 291 km (181 mi) journey.

Find the answers to the puzzle here:  
<https://www.the-sun.com/lifestyle/145677/can-you-find-the-eight-differences-in-this-brainteaser-challenge-and-beat-the-58-second-record/>